



MALTA
NATIONAL
CONTACT
POINT



***Intelligent Energy Europe Programme
European Local Energy Assistance Facility***

3 February 2010

CIP's three operational pillars:

Competitiveness and Innovation Programme (2007 – 2013)



**Entrepreneurship
and Innovation
Programme
(EIP)**



**Information
Communication
Technologies – Policy
Support Programme
(ICT - PSP)**



**Intelligent Energy
Europe
(IEE)**

Complementing EU programmes



MALTA
NATIONAL
CONTACT
POINT

RESEARCH:
Technology development,
demonstration, pilots

MARKET:
Mass production and use,
promotion, framework conditions

→ Catalyse “innovation” across EU

Structural Funds
Investments at MS level
(infrastructure, hardware, soft)

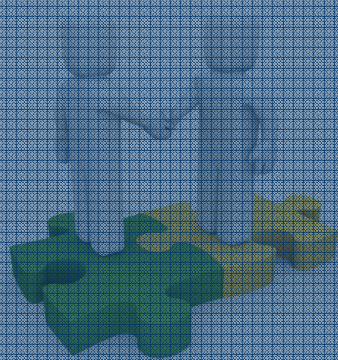
What is the NCP's role?

- To promote and disseminate information
- Encourage and guide participation
- Provide Partner Search support
- Facilitate a collaborative framework conducive to development of synergies across the 3 pillars

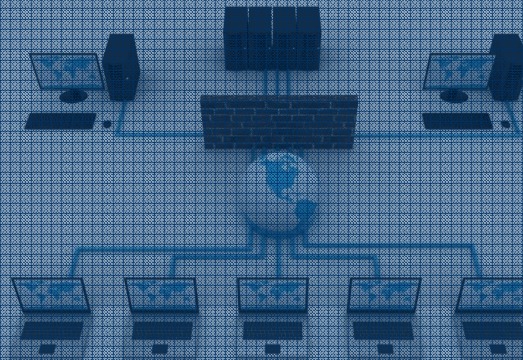
through:

- ✓ www.cipmalta.com
- ✓ regular email-shots
- ✓ one-to-one meetings
- ✓ focused groups
- ✓ information session, seminars, conferences

Competitiveness and Innovation Programme (2007 – 2013)



Entrepreneurship
and Innovation
Programme
(EIP)



Information
Communication
Technologies – Policy
Support Programme
(ICT - PSP)



Intelligent
Energy
Europe
(IEE)

- **promotes** increased **energy efficiency** and the use of **renewable energy** sources by overcoming non-technological barriers (legal, financial, institutional, cultural and social barriers)
- **Objective:** secure, competitive & sustainable energy in Europe
- IEE-2: from 2007 to 2013 with a budget of €730m and max. co-financing of promotion & dissemination projects at 75%
- Annual Work Programmes implemented through: calls for projects, tenders, CAs, preparatory actions, etc.
- 2010 WP: €101m estimated total budget; Call for proposals expected around March with deadline in end June.

Implemented through:

- **Promotion & Dissemination Projects (P&D projects)** – *under the Call for Proposals*

Enabling Policies: 20% by 2020

Market transformation

Changing behaviour

Access to capital

Training

- Most suitable for pioneers and multipliers
- Can support the implementation of NEEAP, SEAP

- **European Local Energy Assistance Facility (ELENA)**

- supports the preparation of investment programmes by local and regional authorities contributing to the 20-20-20 initiative

- *in cooperation with EIB*

- **Studies, communications campaigns, databases, etc.** – *under Call for tenders*

IEE does not fund:

- **Research & Development projects**
- **demonstration projects**
- **hardware & infrastructure investments**

P&D projects – 2010 expected fields of action

- **SAVE: *Energy Efficiency***
 - Buildings
 - Consumer behaviour
- **ALTENER: *Renewable Energy Sources***
 - Electricity
 - Buildings
 - Bioenergy
- **STEER: *Clean and Energy Efficient Transport***
 - EE transport
 - Capacity building on energy aspects of transport
- ***Integrated Initiatives***
 - Local energy leadership
 - Strengthening Capacities for financing EE and RES in housing

Project Development Services for EE and RES Projects in Municipalities and Regions

The European Local Energy Assistance (**ELENA**) facility aims to support the development of investment programmes in cities, through a number of pilot cases that can be then replicated in other cities or regions, by:

- encouraging and helping project promoters to identify and prepare **bankable projects**
- improving access to equity and credit markets, maximising investment **leverage** from available budgetary resources (min 25 leverage factor)
- **reducing transaction costs**, notably by bundling small investments into more economic packages/portfolios

The main **target groups** will be cities, municipalities and regions committed to achieving and going beyond the objectives of the EU sustainable energy policy (20/20/20 by 2020).

Eligible Final Beneficiaries:

- Local or regional authorities and other **public bodies**
- Groupings of such bodies
- Other public bodies lending support to such bodies

Investment areas:

1. Public and private buildings, including social housing and street and traffic lighting to support increased **energy efficiency** (refurbishment of buildings aimed at significantly reducing energy consumption, such as thermal insulation, efficient air conditioning and ventilation, efficient lighting)
2. Integration of **RES** into the **built environment** (solar PV, solar thermal collectors and biomass)
3. Investment into renovating, extending or building new **district heating/cooling networks, decentralised CHP systems** (building or neighbourhood level)

Investment areas:

- 1. Urban transport** to support increased EE and RES integration (high EE buses, incl. hybrid; electrical or low-carbon propulsion systems; electric cars; new more EE concepts to improve freight logistics in urban areas)
- 2. Local infrastructure** including smart grids and ICT infrastructure, EE urban equipment, inter-modal transport facilities and refuelling infrastructure for alternative fuel vehicles

Eligible costs:

- Any **technical assistance** that is necessary to prepare, implement and finance the investment programme (feasibility and market studies, project structure, business plans, energy audits, preparation of tendering procedures and contractual arrangements; VAT if documented that it cannot be recovered by the beneficiary)
- **exclude any subsidies to investment (hardware) costs.**
- **external experts** contracted by the EIB or the final beneficiary according to the national procurement rules
- **additional staff** hired by the final beneficiary
- Financial assistance for technical assistance **not awarded retrospectively**

- **Call opened** in mid December 2009
- The funds will be allocated by EIB on **first come, first served** basis
- **Budget:** €15m (2009) and another €15m for 2010
- **Co-financing:** up to 90%
- **Investment value:** ideally min. €50m
- **Leverage** factor between ELENA support and actual investment >25 (in case of non-respect EIB has the right to recover in part or fully the grant under the facility)
- ELENA can be **combined with EU and national grants**

How to apply?

I. Pre-application contact with EIB, min. info to be presented:

- Brief description of the planned **investment** programme (**type**, approach to the implementation, etc.). The investments do not need to be fully defined!
- Expected investment **cost**
- Investment programme development **schedule**
- **Amount, scope and main needs** to be addressed by the requested **technical assistance**

II. EIB assesses:

- Proposal meets selection criteria,
- If other EU facilities (e.g. ERDF, Jessica, Jasper) are not more suitable,
- The need for technical assistance of the specific investment programme (EIB shall help defining it).

III. If positive reaction from EIB -> **formal application** to be submitted to EIB -> EC approval

Selection procedure timeframes: cca. 3 months

More information:

http://www.eib.org/products/technical_assistance/elena/index.htm

ELENA Secretariat: elena@eib.rg

Thank you for your attention!

**Anamaria Pantea
Manager**

CIP Malta National Contact Point

Malta Investment Management Co. Ltd.
Enterprise Centre
San Gwann Industrial Estate
San Gwann SGN 3000, Malta

T: (+356) 21 497 970
E: info@cipmalta.com
W: www.cipmalta.com



MALTA
NATIONAL
CONTACT
POINT



MIMCOL