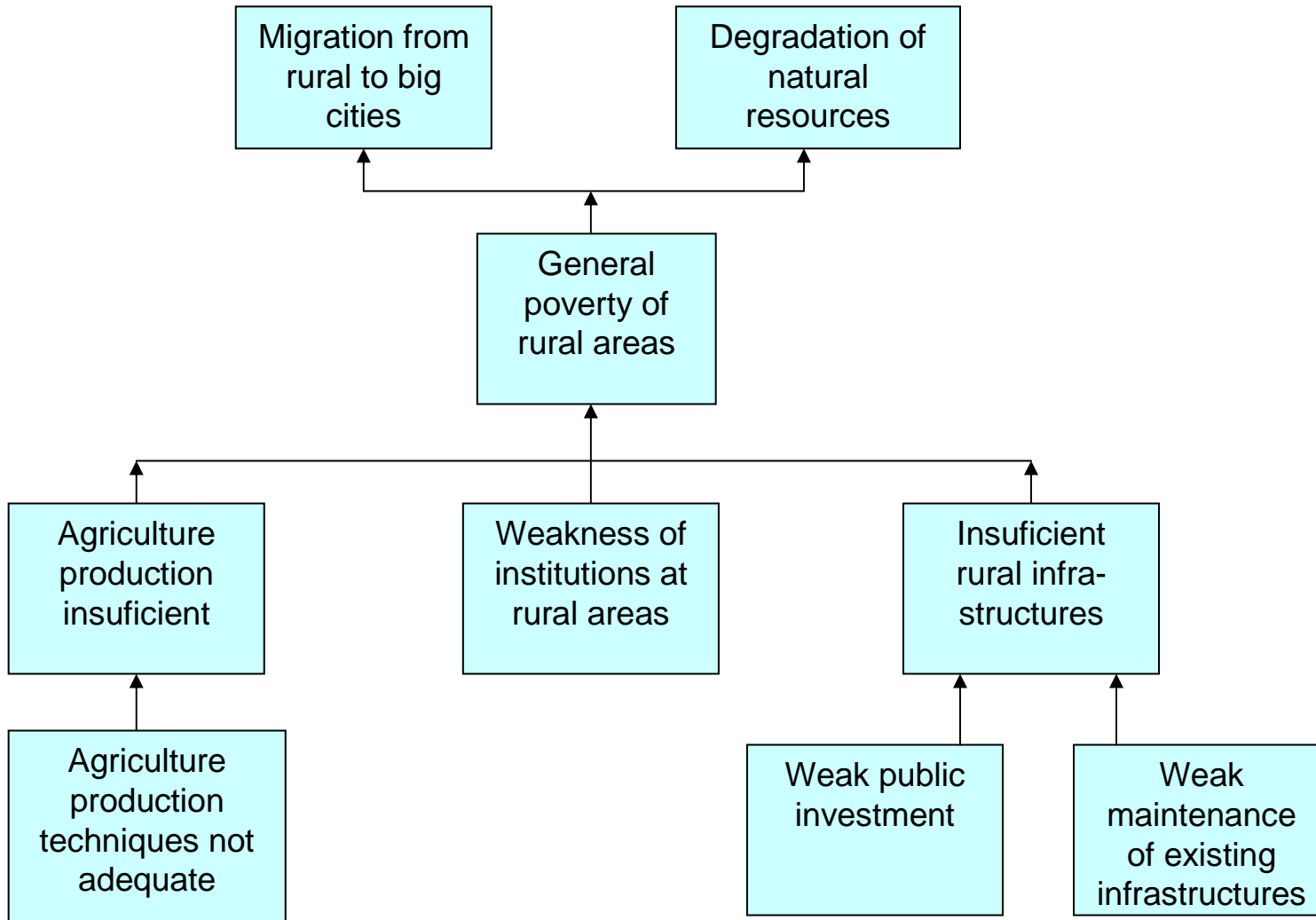
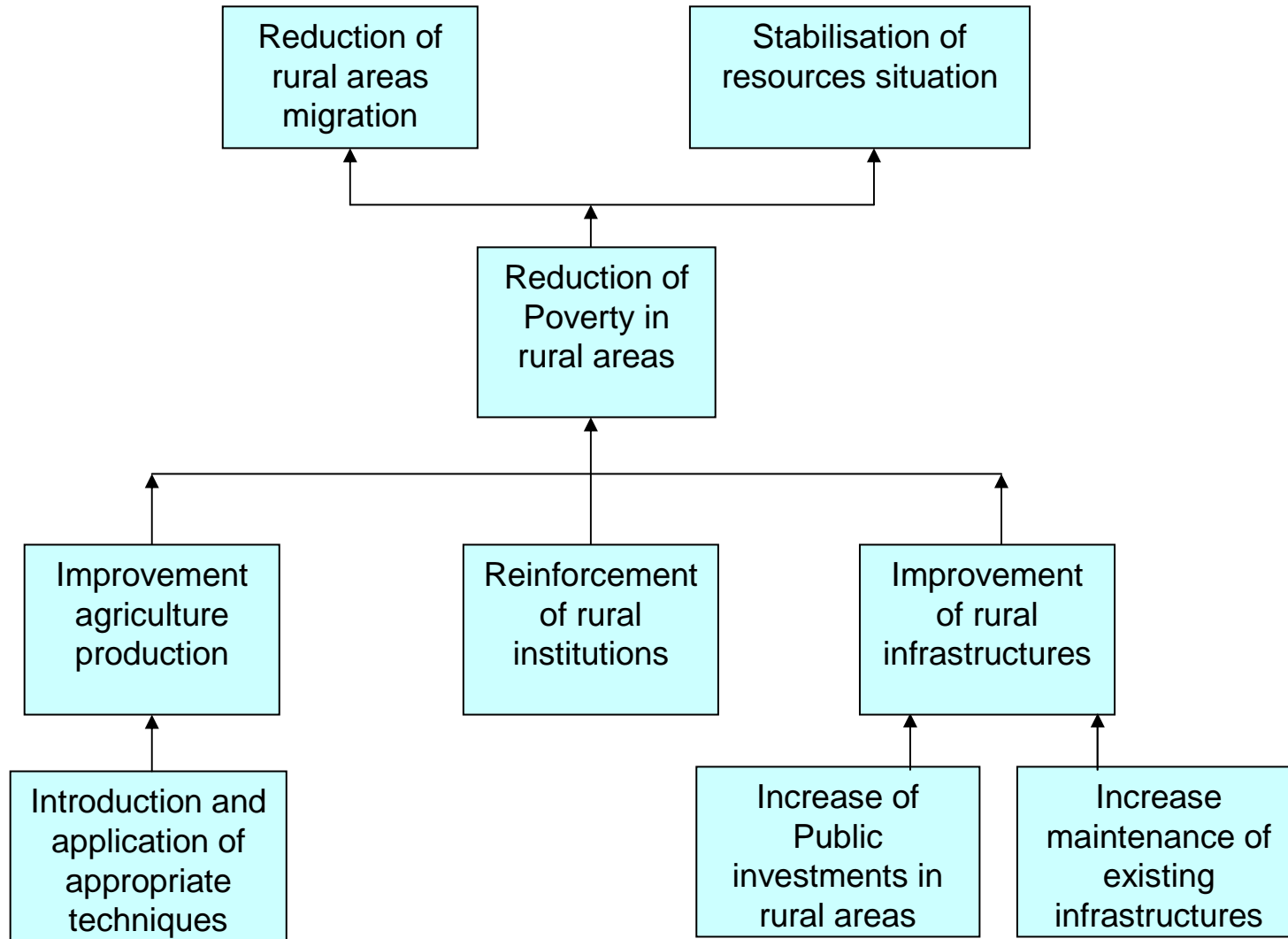


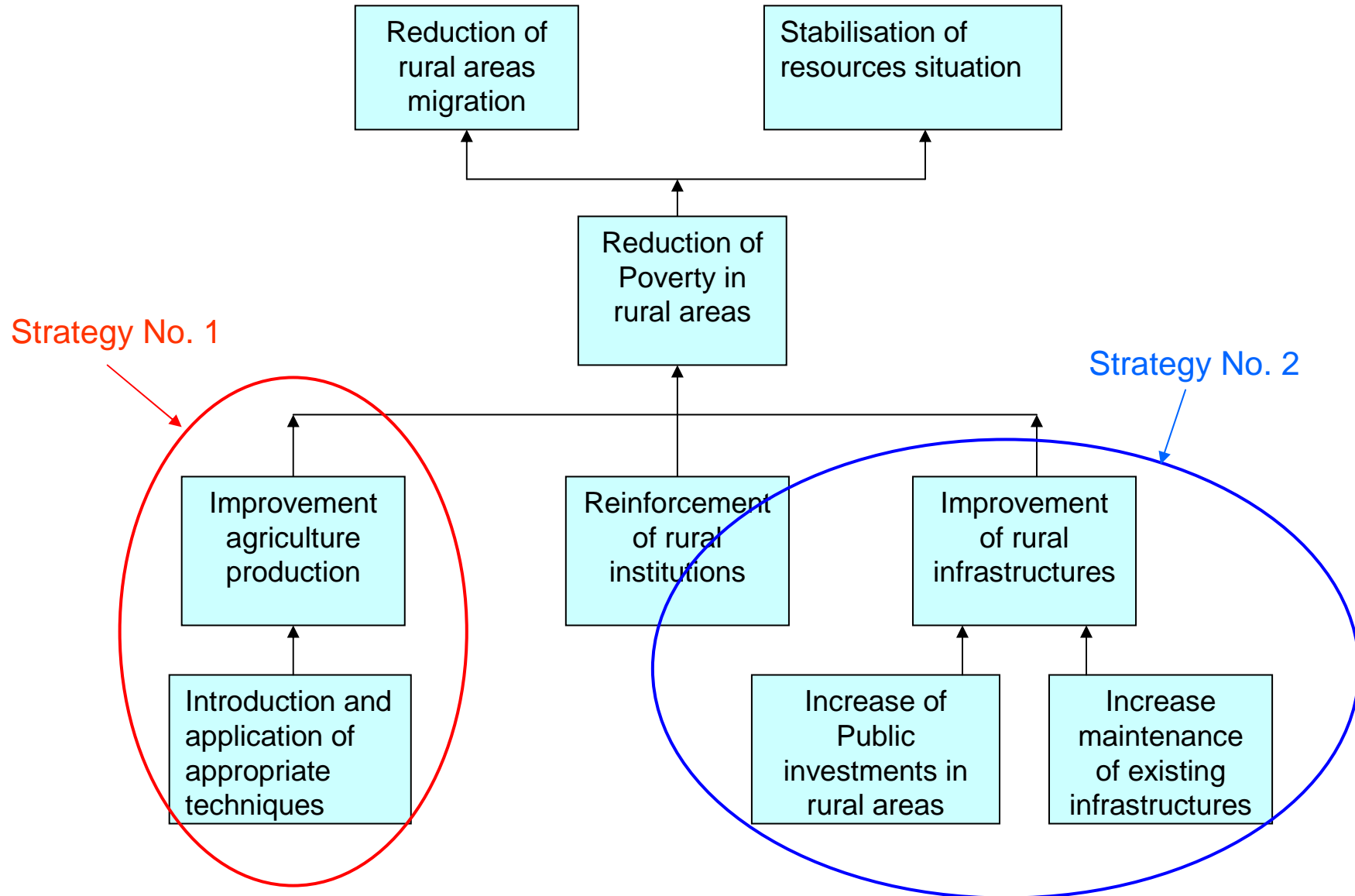
Example Tree Problems



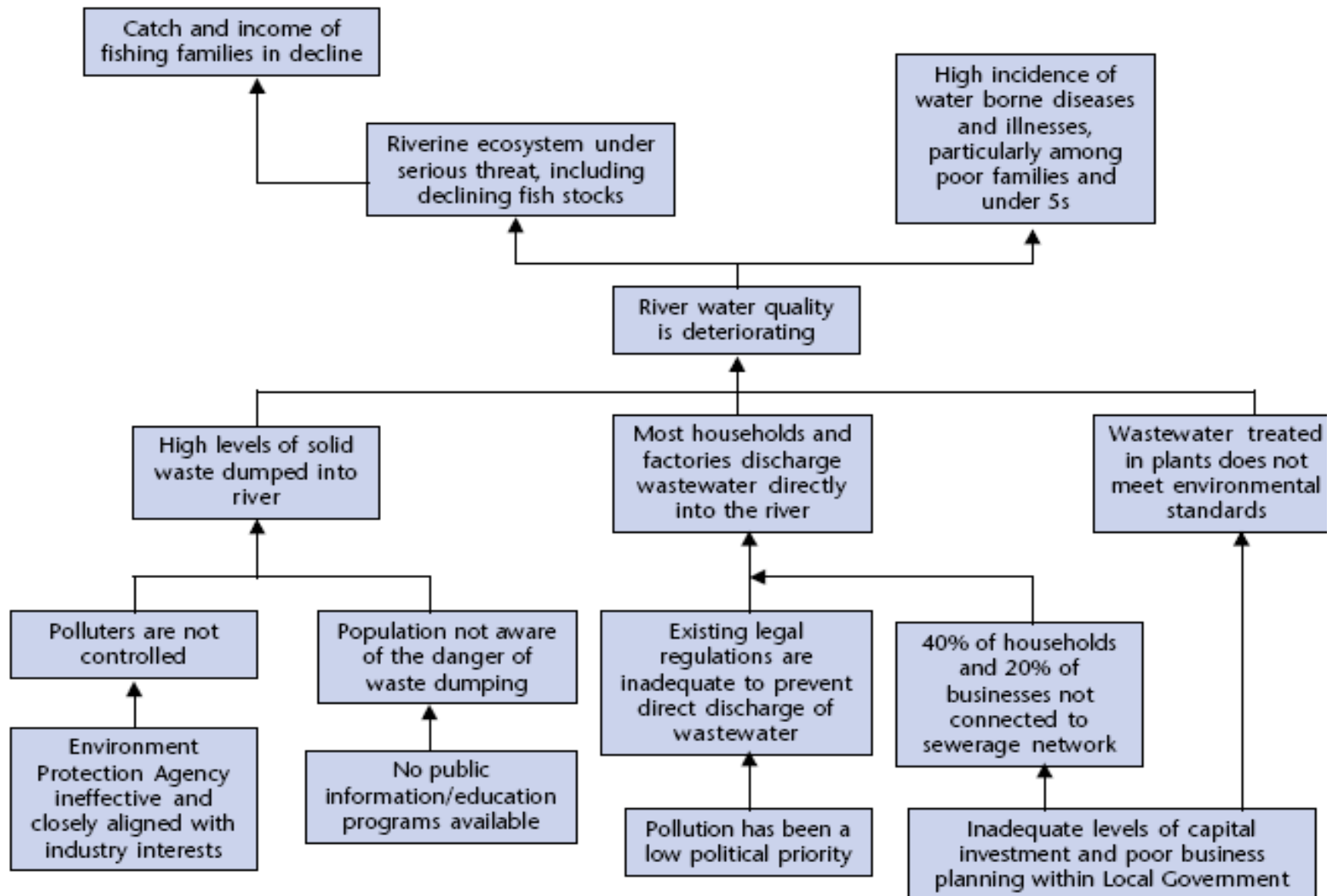
Example of tree objectives



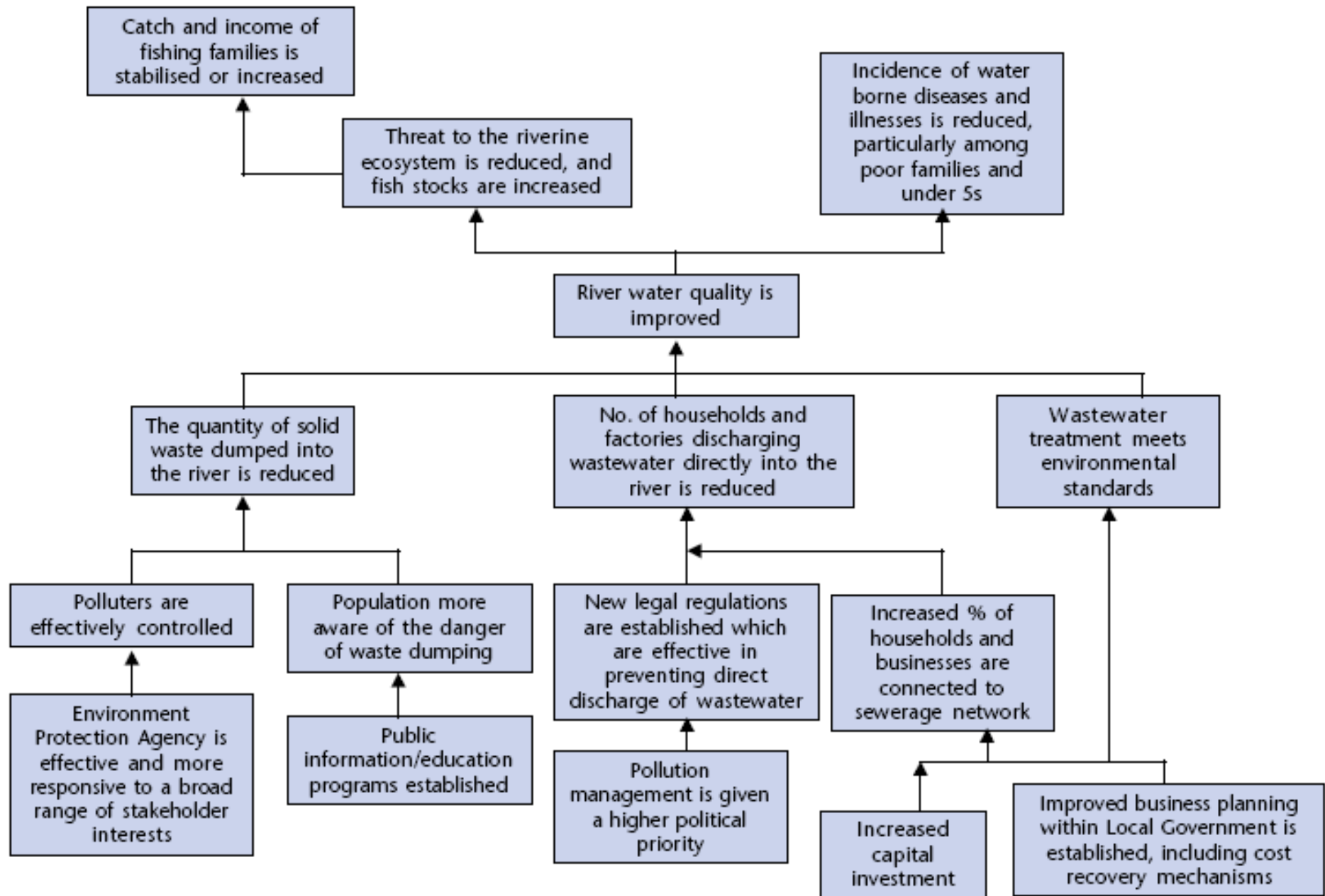
Example: clusters of objectives



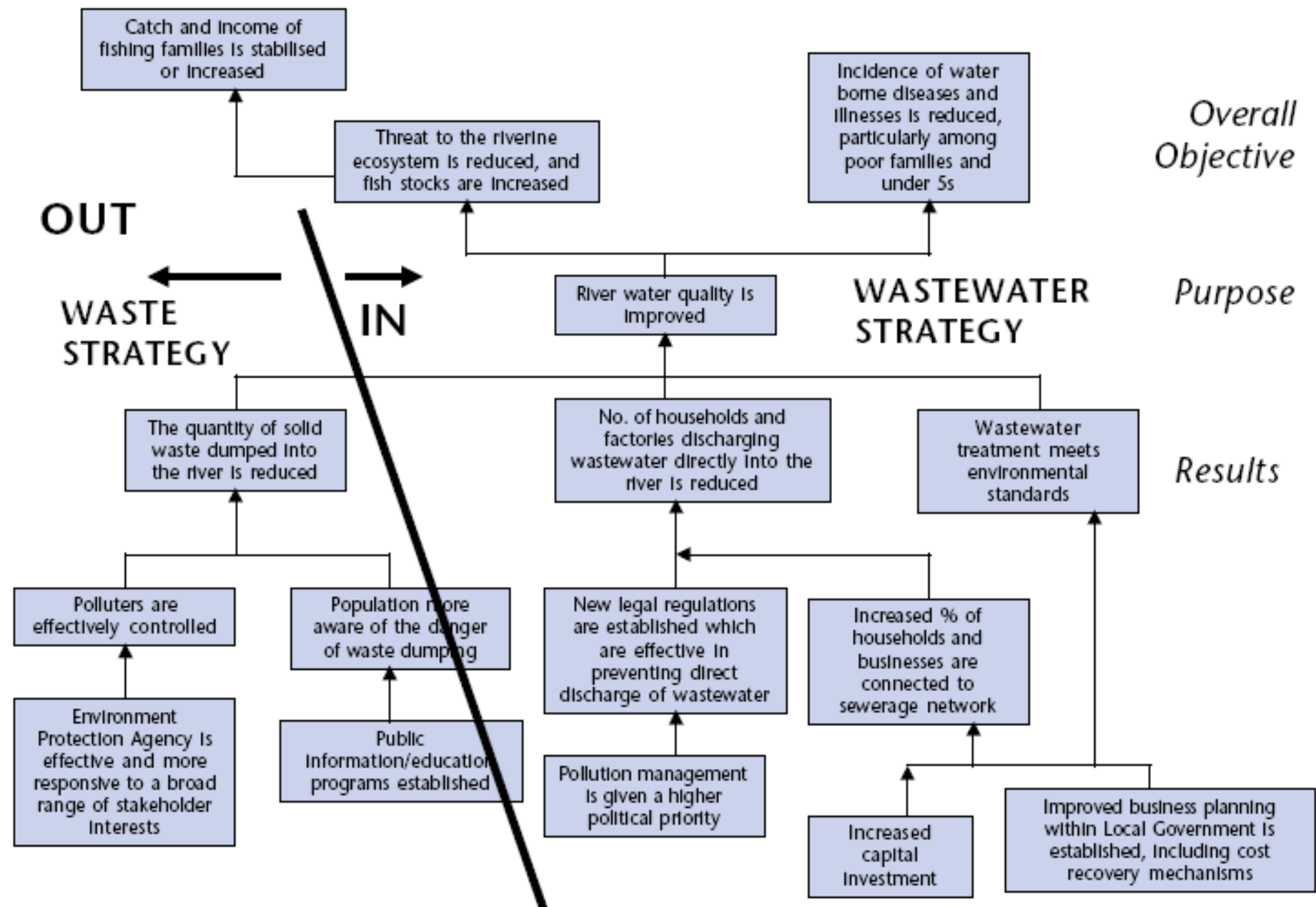
Problem analysis – river pollution



Objective tree – river pollution



Strategy selection



Project description	Indicators	Means of Verification	Assumptions
<p>Overall objective To contribute to improved family health, particularly the under 5s, and to improve the general health of the riverine eco-system</p>	<p>- Incidence of water borne diseases, skin infections and blood disorders caused by heavy metals, reduced by 50% by 2008, specifically among low-income families living along the river</p>	<p>- Municipal hospital and clinic records, including maternal and child health records collected by mobile MCH teams. Results summarized in an Annual State of the Environment report by the EPA.</p>	
<p>Purpose Improved quality of river water</p>	<p>- Concentration of heavy metal compounds (Pb, Cd, Hg) and untreated sewerage; reduced by 25% (compared to levels in 2003) and meets established national health/pollution control standards by end of 2007</p>	<p>- Weekly water quality surveys, jointly conducted by the Environmental Protection Agency and the River Authority, and reported monthly to the Local Government Minister for Environment (Chair of Project Steering Committee)</p>	<p>- The public awareness campaign conducted by the Local Government impacts positively on families sanitation and hygiene practices - Fishing cooperatives are effective in limiting their members exploitation of fish 'nursery' areas</p>
<p>Result 1 Volume of waste-water directly discharged into the river system by households and factories reduced</p>	<p>- 70% of waste water produced by factories and 80% of waste water produced by households is treated in plants by 2006</p>	<p>- Annual sample survey of households and factories conducted by Municipalities between 2003 and 2006</p>	<p>- River flows maintained above X mega litres per second for at least 8 months of the year - Upstream water quality remains stable</p>
<p>Result 2 Waste-water treatment standards established and effectively enforced</p>	<p>- Waste water from 4 existing treatment plants meets EPA quality standards (heavy metals and sewerage content) by 2005</p>	<p>- EPA audits (using revised standards and improved audit methods), conducted quarterly and reported to Project Steering Committee</p>	<p>- EPA is successful in reducing solid waste disposal levels by factories from X to X tons per year</p>
<p>Etc</p>			

Project Description	Indicators	Source of Verification	Assumptions
<p>Overall objective: The broad development impact to which the project contributes – at a national or sectoral level (provides the link to the policy and/or sector programme context)</p>	<p>Measures the extent to which a contribution to the overall objective has been made. Used during evaluation. However, it is often not appropriate for the project itself to try and collect this information.</p>	<p>Sources of information and methods used to collect and report it (including who and when/how frequently).</p>	
<p>Purpose: The development outcome at the end of the project – more specifically the expected benefits to the target group(s)</p>	<p>Helps answer the question ‘How will we know if the purpose has been achieved’? Should include appropriate details of quantity, quality and time.</p>	<p>Sources of information and methods used to collect and report it (including who and when/how frequently)</p>	<p>Assumptions (factors outside project management’s control) that may impact on the purpose-objective linkage</p>
<p>Results: The direct/tangible results (good and services) that the project delivers, and which are largely under project management’s control</p>	<p>Helps answer the question ‘How will we know if the results have been delivered’? Should include appropriate details of quantity, quality and time.</p>	<p>Sources of information and methods used to collect and report it (including who and when/how frequently)</p>	<p>Assumptions (factors outside project management’s control) that may impact on the result-purpose linkage</p>
<p>Activities: The tasks (work programme) that need to be carried out to deliver the planned results <i>(optional within the matrix itself)</i></p>	<p><i>(sometimes a summary of resources/means is provided in this box)</i></p>	<p><i>(sometimes a summary of costs/budget is provided in this box)</i></p>	<p>Assumptions (factors outside project management’s control) that may impact on the activity-result linkage</p>

Example Indicator

