



Business Support at Your Doorstep

Enterprise Europe Network

How can we help?



Johann Caruana
Manager
Internationalisation Unit
& Enterprise Europe Network

17th March 2010

CIP: Entrepreneurship and Innovation Programme (EIP)



The EIP is one of the specific programmes under the Competitiveness and Innovation Framework Programme (CIP). With this programme, the European Commission seeks to support innovation and SMEs in the EU.



The Enterprise Europe Network has been set up through the EIP in order to achieve the CIP objectives.

Competitiveness
and
Innovation
Programme
(CIP)

Entrepreneurship
and
Innovation
Programme (EIP)

Information
Communication
Technologies Policy
Support Programme
(ICT PSP)

Intelligent
Energy Europe
(IEE)

Enterprise
Europe Network

Enterprise Europe: a network of excellence

- For the first time ever, **all major players** of the business support community join forces to offer a one-stop service for enterprises. **Over 500 organisations** involved in the EEN (a good mix of regional chambers of commerce and industry, technology and innovation agencies, sector associations and host organisations for cluster initiatives)
- The largest European network offering high quality services, mainly to the benefit of SMEs. Present in EU27, European Economic Area [Norway, Iceland], Candidate Countries [Turkey, FYROM], Switzerland, other third countries [Israel, Armenia]



- Implementation of the **‘No-wrong-door’ principle**
- **The broadest range of tailored services** for SMEs in the EU and beyond

Services of Enterprise Europe Malta

- A. Support for internationalisation**
- B. Support for innovation**
- C. Support for access to EU projects and programs**
- D. Making SMEs the sounding board for possible future EU policies through feedback functions [consultation via website]**

Support for access to EU programs



C. Support for access to EU programmes



The Exploratory Award Scheme will cover 60% of the total eligible costs of the preparatory proposal up to a maximum of € 10,000 and covers costs related to personnel, technical advisors and traveling

Possible Scenario

5.3 Total Costs	
Description of planned programmes	Total Costs (€)
Total Personnel Costs	2388.19
Technical Consultants	2329.37
Total Travel Costs	655.09
TOTAL Costs	5372.65

€ 3,223.59

60% of the TOTAL COSTS will be refunded (Capped at € 10,000)



Business Support at Your Doorstep

Funding Opportunities Alert



- Calls for SMEs
- Partner Searches
- Business and Tender Opportunities
- News and Events
- Malta Enterprise Schemes
- Link to Europe
- ASK ME – Post a Query

Latest information on European funding initiatives, according to your area of interest direct to you via email.



FA 1093: ICT-PSP CALL 4 2.3 DIGITIZING CONTENT FOR EUROPEANA



We are currently preparing a proposal under call 4 for ICT-PSP: instrument Pilot B under Theme 2.3: Digitizing Content For Europeana. RTD Talos, Network Partner for BSC-Cy (EEN Cyprus) is co-ordinator of the project. The project will revolve around the digitization of travel books from the 16th-20th century from the islands of the Mediterranean. The project involves gathering exploration narratives, descriptions of travelling etc, which will be subsequently digitized from another partner of the project- a digitization company- for access on Europeana. A respectable amount of partners has agreed to participate such as foundations with excellent collections, libraries, educational and culture authorities etc.

We are currently looking for a partner who can either contribute to our collections to be digitized or for someone who can offer INTELLECTUAL PROPERTY RIGHTS knowledge so as to be leader of the specific work package. We have received legal advice on the issue of IPR but wish to dedicate an entire WP on the subject in order to ensure best effectiveness.



FA 1095/1096: Research Partner CIP -PSP
 ICT - ICT for 1.1 ICT water Efficiency
 &
 Partner Search CIP-PSP ICT 3.3 e-Accessibility of Public Digital
 Terminals



Tecnomarche is the Science and Technology Park (PST) of the Marche Region legally recognised by national and local government and It looking for a partner for CIP-ICT PSP.

The park realises ad ok collaboration with Universities and Research Centres (at local, national and European level) in order to supply a full customer service. Moreover, PSTMarche operates technology transfer and training towards the regional industrial systems, as well as participates at knowledge networks at national and European level.

In PSTMarche Laboratory actually operates about 20 researchers and in last few years has been employed about 50 researchers as trainees, PhDs and students.

Main activities and services relate to:

- Realisation of R&D projects and project management
- Found raising for industrial research project development
- Company check-up and technological diagnoses

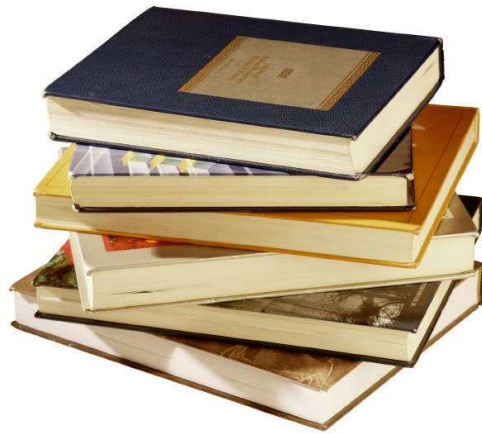
Feasibility studies

Industrial Property Right services

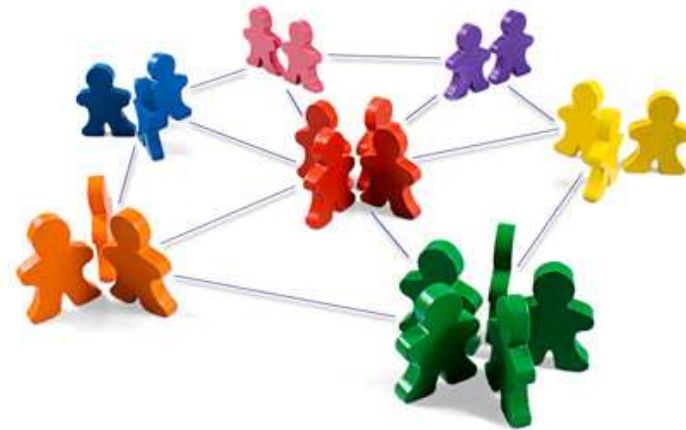
Training

We are looking for a partners coordinator for CIP-ICT PSP PROGRAMME.

Other Services



EEN Library



FP7 Database

Join us on facebook

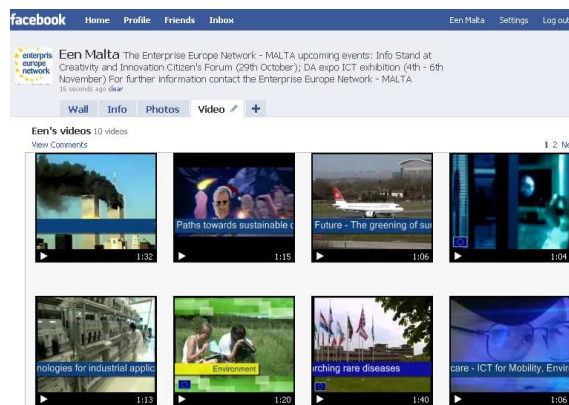


The Enterprise Europe Network - MALTA is now on facebook. Add us to inform yourself with the latest EU funding news and information, and about any events organised by the Enterprise Europe Network—MALTA .

Our username is: **Een Malta**

or find us by email:

johann.caruana@maltaenterprse.com



Thank you

You're welcome to contact us on
info@enterprise-europemalta.com

And in the coming days do visit our website
www.enterprise-europemalta.com
and become a registered user