



# **ZOOMING *ON* SUSTAINABILITY**

Malta **13-15 May 2009**

Ing. M. Dalmas

Technical Services Manager – MIA plc

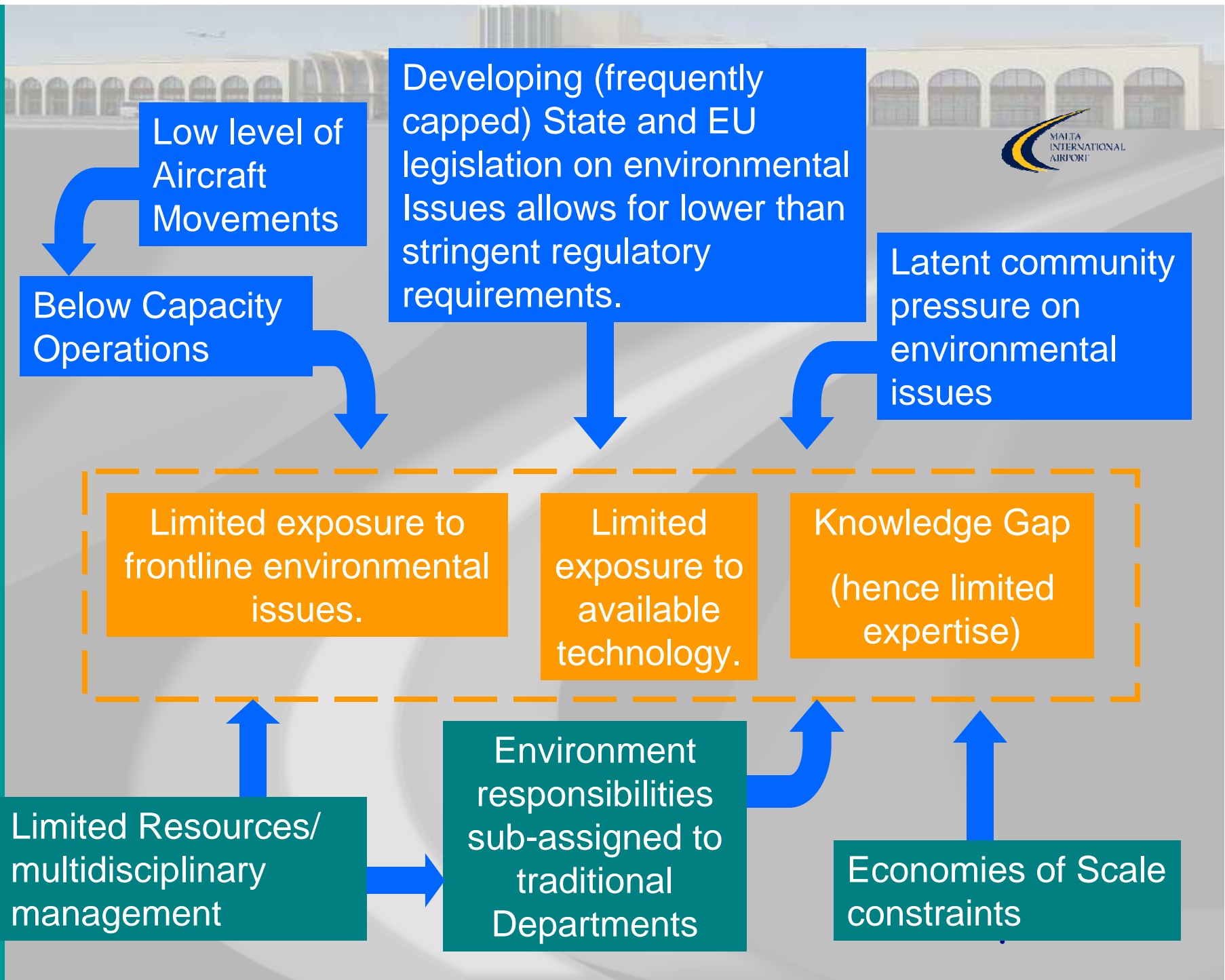


**maltairport**  **com**



**Planning for Environmental  
Sustainability at  
Malta International Airport plc**

# Small Airport Environment



Low level of Aircraft Movements

Below Capacity Operations

Developing (frequently capped) State and EU legislation on environmental Issues allows for lower than stringent regulatory requirements.

Latent community pressure on environmental issues

Limited exposure to frontline environmental issues.

Limited exposure to available technology.

Knowledge Gap (hence limited expertise)

Limited Resources/ multidisciplinary management

Environment responsibilities sub-assigned to traditional Departments

Economies of Scale constraints





## MIA's Environmental Strategy

..... is one aimed at sustaining incremental improvement beyond responsibility for compliance with State legislation and EU Regulations.

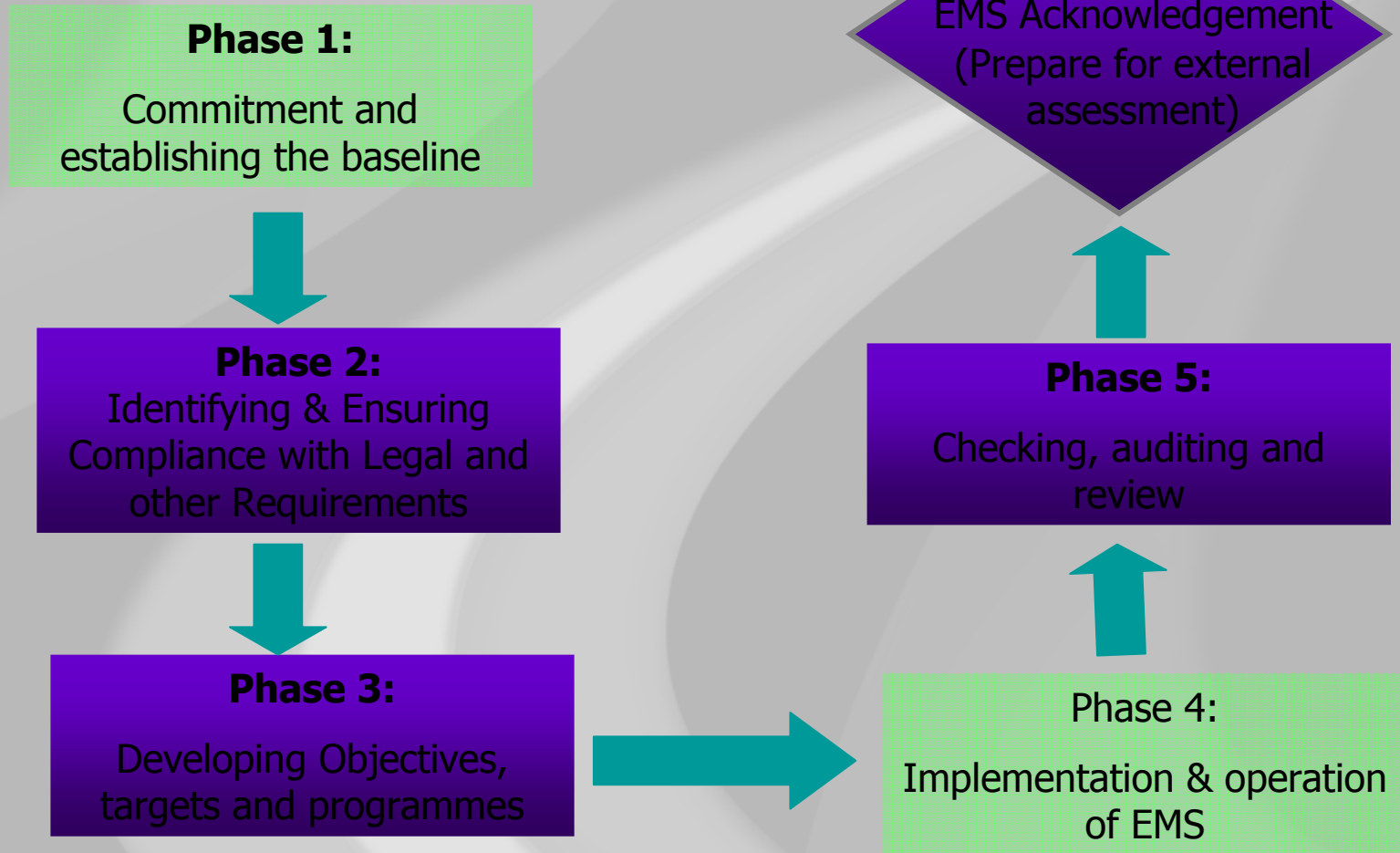
..... namely one which remains sensitive to business constraints but actively strives to inspire benefit from opportunities available.



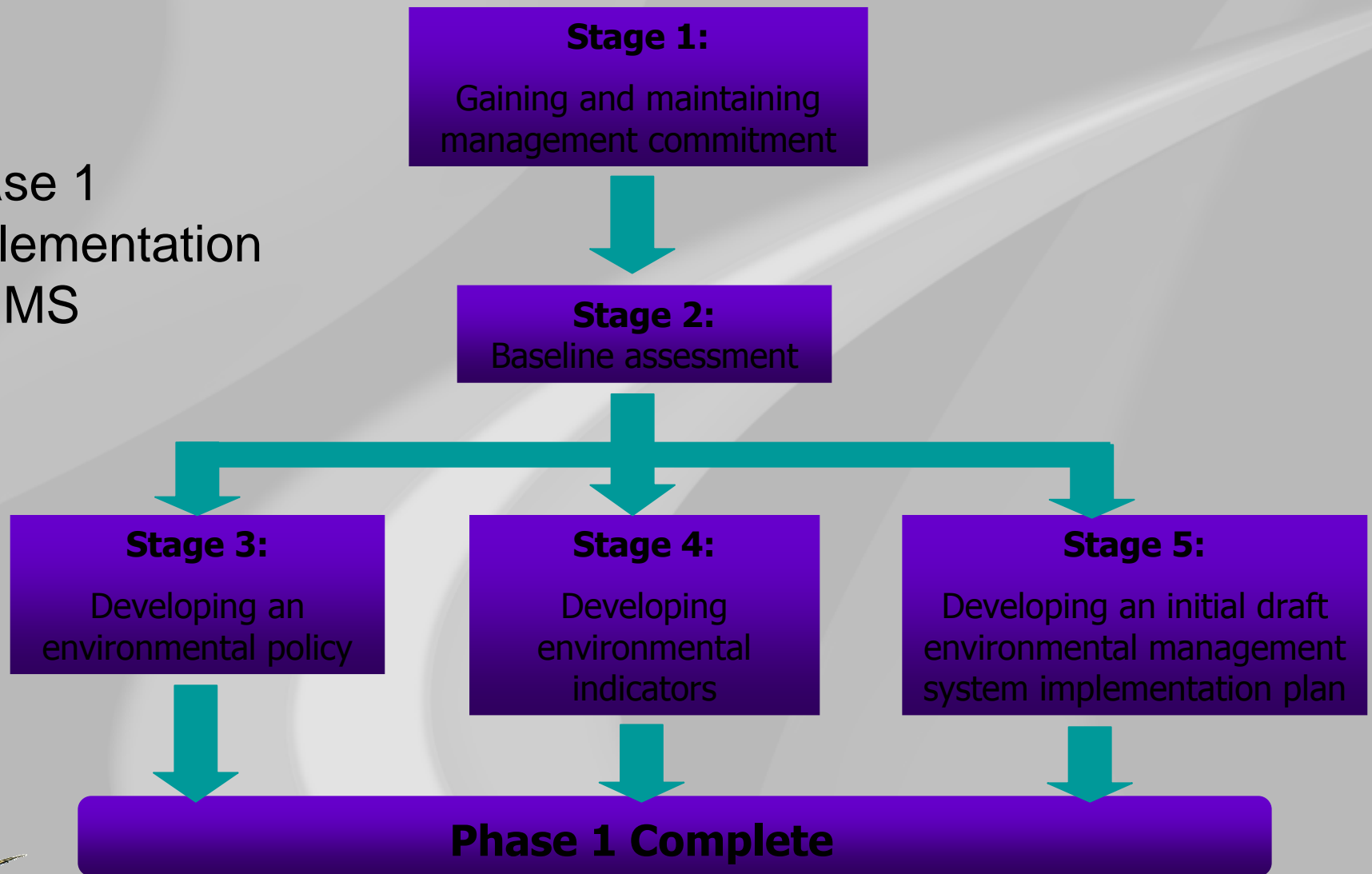
## Sustainable Development Strategy

- Active Participation within ACI-Europe Envstrat Committee
- Staged Implementation of an Environmental Management System
- Monitor and constrain carbon footprint
- Support energy needs with renewable energy initiatives.
- Support State-wide and community environmental initiatives (CSR)

# Phased Implementation of EMS (BS8555:2003)



# Phase 1 Implementation of EMS



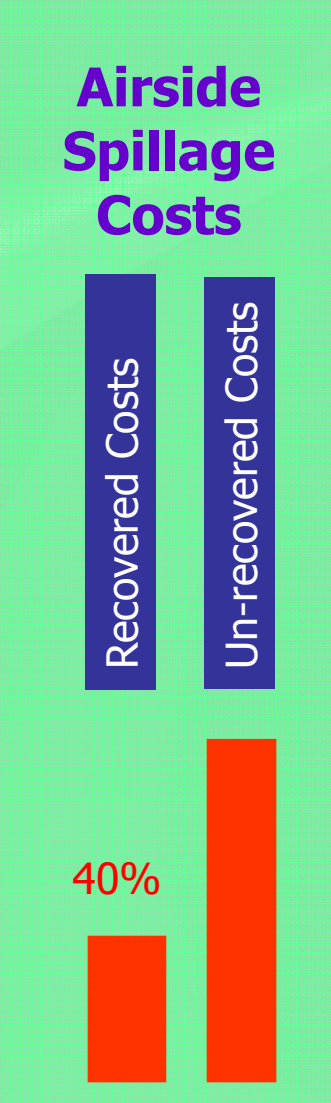


## EMS Focus Areas

- Recycling and Waste Management
- Air Quality
- Water Quality (including storm water run-off)
- Aeronautical Noise
- Resource Efficiency
- Wildlife and Natural Habitat Management
- Environmental Impact Assessments
- Training & Awareness Campaigns
- Environmental Status Reporting



# EMS Focus Areas Ground Water Quality



# ACI Carbon Accreditation Scheme Concept and Overview

## Overall commitment to carbon reduction:

- Avoid
- Contain
- Reduce
- Offset



## Staged approach based on:

1. Footprint assessment and verification
2. Management plans
3. Footprint reduction
4. Carbon neutrality

## Recognition of improvements at each stage



# Scheme Design Principles

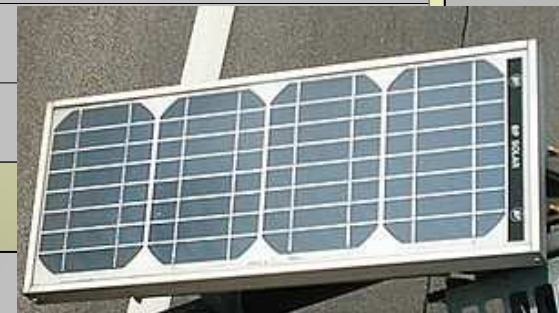
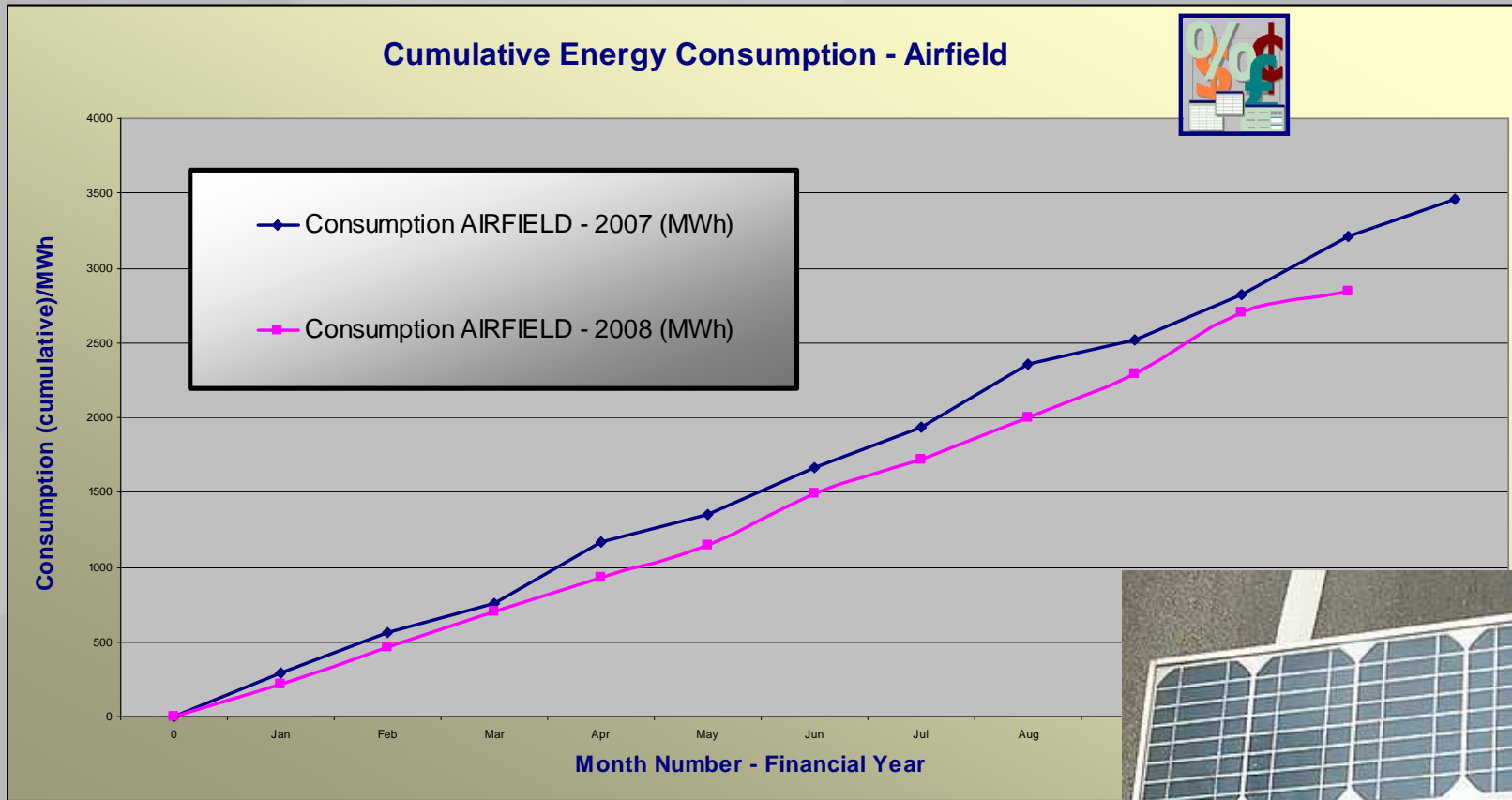


**Airport Carbon Accreditation Scheme**



Level	Carbon footprint scope			Verified footprint	Target set & improvement delivered	Carbon management plan	Stakeholder engagement plan	Absolute reduction on baseline year	Residual emissions offset
	Scope 1	Scope 2	Scope 3*						
1	✓	✓		✓					
2	✓	✓	✓*	✓	✓	✓			
3	✓	✓	✓*	✓	✓	✓	✓	✓	
3+	✓	✓	✓*	✓	✓	✓	✓	✓	✓

# Current Initiatives



- Replace equipment with Energy Efficient alternatives
- Meter and monitor consumption of all services
- Rational use floodlighting systems

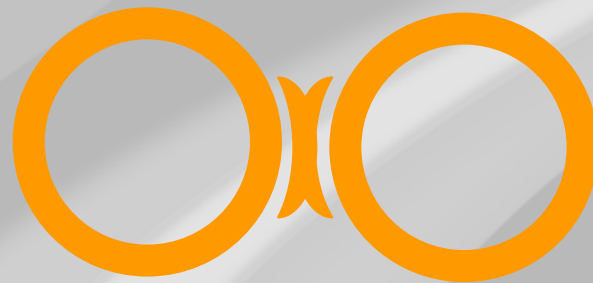


# Critical Success Factors

- Top Management must be committed to EMS from its inception and must continue to support it actively.
- Grass Roots Approach which stimulates ownership of EMS processes by employees and stakeholders.
- Management Review to be supported by efficient follow-up.
- Allocation of proportional human, financial and material resource support.



Thank You .....



**ZOOMING *ON* SUSTAINABILITY**

**Malta 13-15 May 2009**



**maltairport  com**